



SKID STEER LOADERS

VERTICAL-LIFT



2700V NXT2 ▲ 3300V NXT2 ▲ 4000V



IN THE BEGINNING

What began in the 19th century as an agricultural implement manufacturer has grown into a 21st century compact equipment powerhouse – Mustang Compact Equipment.

Known in the early years as the Owatonna Manufacturing Company, Mustang was among the first to make what is known today as the skid steer loader. Since that time, Mustang has combined old-school experience with innovative processes to offer one of the broadest lines of compact equipment available today.

MUSTANG. THE ORIGINAL WORKHORSE.



MEET THE NEXT GENERATION



VERTICAL-LIFT SKID STEER LOADERS



VERTICAL WORKHORSES

Unique vertical-lift boom design provides total control and excellent forward reach at the middle and top of the lift cycle.



MODERN STYLING

The new herd of vertical-lift skid steer loaders bring sleek body styling and a cab-forward design for increased visibility.



MAXIMUM CAPACITY

High rated operating capacities from 2,700 lbs. (1225 kg) on the 2700V NXT2 to 4,000 lbs. (1814 kg) on "The Beast" 4000V.



EXCEPTIONAL VISIBILITY

Featuring an updated ROPS structure, the operator's station offers increased visibility, comfort and technology.



HIGH-POWERED ENGINES

Emissions-certified Tier IV engines combine impressive power and high efficiency on the 2700V NXT2 and 3300V NXT2.



SERVICE ACCESSIBILITY

New safety cab restraint allows safe and easy access to service areas and maintenance check points.

TAME THE WILD SPIRIT



- ▶ 2700V NXT2
- ▶ 3300V NXT2
- ▶ 4000V

Only the original VERTICAL workhorses from Mustang come ready to power through any challenges they meet during the workday.

HIGH LIFTING ▲ Vertical-lift design provides 144 inches (3647 mm) of lift height on the all-new model 4000V.

HIGH CAPACITY ▲ Rated operating capacities from 2,700 lbs. (1225 kg) on the model 2700V NXT2 to 4,000 lbs. (1814 kg) on the model 4000V provide the raw power for heavy-duty jobs.

FUEL ECONOMY ▲ Equipped with an electronic engine control and electronic hand and foot throttles*, these skid steers can be operated at partial throttle for lower sound levels and reduced fuel consumption. A hydraulic engine cooling fan on the 4000V increases fuel efficiency and reduces noise levels.

* Electronic foot throttle not available on hand/foot controls



VERTICAL BOOM DESIGN ▲ delivers extended reach and high lift heights for easy truck loading and material handling in a vertical path. *(near vertical path on 2700V NXT2 and 3300V NXT2)*



EXTRA LONG WHEELBASE ▲ enhances machine stability when lifting and loading providing a smoother ride over rough terrain.



SHIFT INTO HIGH GEAR ▲ with standard two speed "soft-shift" drive on the 2700V NXT2 and 3300V NXT2, providing smooth transitions between gears.

RAW PERFORMANCE



AUXILIARY HYDRAULICS ▲ are standard, powering many attachments. Optional high flow increases their capability. Dependent on control pattern, a rocker switch or foot pedal provides electronic proportional flow control.



EXCELLENT VISIBILITY ▲ to the sides, rear and front is achieved with a unique, low-profile boom design. A roof window allows the operator to view the quick-attach when the lift arm is fully raised.



HEAVY-DUTY CHASSIS ▲ provides excellent weight distribution, enhancing machine stability. A rear bumper and counterweight on the model 3300V NXT2 adds protection and towing capability.

2700V NXT2 ▲ 3300V NXT2 ▲ 4000V

CLIMB INTO THE SADDLE



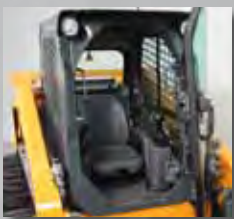
EXCELLENT VISIBILITY ▲
A cab-forward design enhances the view to the bucket cutting edge from the operator's seat.



SIDE RESTRAINT BAR ▲
A side-folding restraint bar and adjustable arm rests provide personalized comfort and increased safety.



JOYSTICK CONTROLS ▲
Fully adjustable joystick control towers and an air-ride suspension seat option provide extreme comfort.



PRESSURIZED CAB ▲ An optional, pressurized, sealed cab enclosure provides a cleaner, quieter operating environment with heat, or heat and air-conditioning.



INSTRUMENTATION ▲
All instrumentation on the 2700V NXT2 and 3300V NXT2 is conveniently located in the upper-right and left-instrument panels for easy access.



The ECU (Engine Control Unit) continually monitors engine and emission functions and alerts the operator of any issues through the monitor displays.

The cab is the operational core for any job.

Mustang understands this and provides an operator's station customized to YOUR needs.



JOYSTICK CONTROLS

GET IN CONTROL - Joystick controls, dual-hand controls, or hand/foot controls provide the ultimate operator experience.



MULTI-TACH® SYSTEM ▲
standard on all models is this universal-style attachment mounting system compatible with most allied attachments.

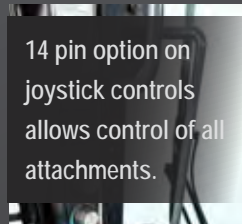
POWER-A-TACH® SYSTEM ▲
optional on all models, this hydraulic system allows users to quickly install and remove attachments, leaving the seat only to connect auxiliary hydraulics.

TIME IS MONEY GET ATTACHED

With a wide variety of EDGE attachments available from your dealer, the Vertical-Lift Skid Steer Loaders are easily transformed to meet the needs of your business.

Skid steer loader attachments in high demand are:

- Augers
- Walk-Through Pallet Forks
- High-Reach Clippers
- High-Dump Buckets
- Rotary Brush Mowers
- ...and more!



14 pin option on joystick controls allows control of all attachments.

EDGE
www.ceattachments.com



FEATURES	2700V NXT2	3300V NXT2	4000V
PILOT CONTROLS			
Hand/Foot Controls	●	●	●
Joystick Controls	●	●	●
ENGINE			
Engine Auto-Shutdown System	○	○	○
Engine Pre-Heater	○	○	○
Turbo-Charged Engine	○	○	○
HYDRAULICS			
Auxiliary Hydraulics	○	○	○
High-Flow Auxiliary Hydraulics	●	●	●
OPERATOR STATION			
Adjustable Arm Rests/Control Towers	○	○	○
Air-Conditioning	●	●	●
High Back Adjustable Seat	○	○	
Suspension Seat - Air Ride	●	●	●
Suspension Seat - Mechanical	●	●	○
Cab Enclosure	●	●	●
Foot and Hand Throttles*	○	○	○
Full Instrumentation	○	○	○
Heating	●	●	●
Horn	○	○	○
Integral Access Plate (removable)	○	○	○
Operator Restraint Bar	○	○	○
ROPS/FOPS Level II Overhead Guard	○	○	○
Sound Reduction Material	○	○	○
Work Lights – Front and Rear	○	○	○
PERFORMANCE			
Multi-Tach® Attachment Mounting System	○	○	○
Power-A-Tach® Attachment Mounting System	●	●	●
14 Pin Option Controls	●	●	●
Anti-Vandalism Protection	○	○	○
Back-Up Alarm	●	●	●
Brake Control (auto / manual)	○	○	○
Counterweight	●	○	
Hydraglide™ Ride Control	○	○	○
Hydraloc™ System	○	○	○
Hydrostatic Drive – Servo	○	○	○
Lift Arm Support Device	○	○	○
Self-Leveling Lift Action	●	●	○
Two-Speed Drive	●	○	○

○ STANDARD ● OPTIONAL

* Foot Throttle Only on Hand Control Units

2700V NXT2 ▲ 3300V NXT2 ▲ 4000V

ORIGINAL WORKHORSE

Mustang authorized dealers offer a full line of compact equipment and attachments, backed up by exceptional sales, service and parts support. To find your nearest authorized Mustang dealer, visit the Dealer Locator on mustangmfg.com

For more information on the Vertical Lift Skid Steer Loaders and the rest of the Mustang equipment line, call our hotline at

1-800-628-0491
or visit mustangmfg.com

SAFETY IS NO ACCIDENT

Mustang reminds users to read and understand the operator's manual before operating any piece of equipment. Additionally, make sure all safety devices and shields are in place and functioning properly.

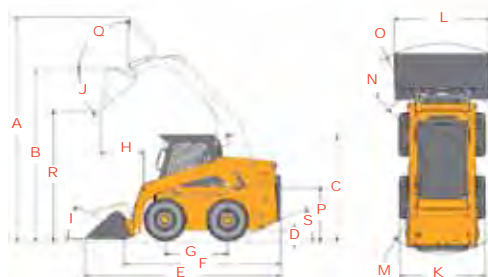
MUSTANG®

West Bend, WI 53095 U.S.A. | Tel: 262-334-9461 | Fax: 262-338-7517

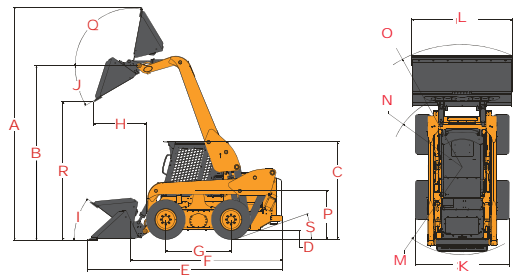
VERTICAL LIFT SPECIFICATIONS		2700V NXT2	3300V NXT2	4000V
DIMENSIONS	A. Overall Operating Height - Fully Raised (mm)	167.4" (4252)	172" (4369)	186.8" (4745)
	B. Height to Hinge Pin - Fully Raised (mm)	130.3" (3310)	131.2" (3332)	144" (3647)
	C. Overall Height to Top of ROPS (mm)	81" (2057)	82" (2083)	82.0" (2083)
	D. Ground Clearance to Chassis	8.0" (203)	9.0" (229)	7.3" (185)
	E. Overall Length with Bucket (mm)	148" (3759)	152.5" (3874)	158.5" (4026)
	F. Overall Length w/o Bucket (mm)	116.5" (2959)	119" (3023)	121.5" (3086)
	G. Wheelbase (mm)	49.5 (1257)	49.5" (1257)	54.6" (1387)
	H. Dump Reach at Full Height (mm)	32" (813)	32" (813)	39.5" (1003)
	I. Bucket Rollback at Ground	29°	29°	31°
	J. Dump Angle	42°	42°	31°
	K. Overall Width (mm)	69.5" (1765)	72" (1829)	79.5" (2019)
	L. Bucket Width (mm)	70" (1778)	74" (1880)	84" (2134)
	M. Clearance Circle - Rear (mm)	66.5" (1689)	69.5" (1765)	70.5" (1791)
	N. Clearance Circle - Front without Bucket (mm)	56" (1422)	56" (1422)	50.8" (1290)
	O. Clearance Circle - Front with Bucket (mm)	90" (2286)	94.5" (2400)	88.5" (2248)
	P. Seat to Ground Height (mm)	40" (1016)	41" (1041)	40.8" (1036)
	Q. Rollback at Full Height	94°	94°	100°
	R. Dump Height (mm)	100" (2540)	98.5" (2502)	114.8" (2916)
	S. Departure Angle	25°	25°	19°
Standard Tire Size		12.00-16.5 HD	14.00-17.5 HD	14.00-17.5 HD
ENGINE	Make	Yanmar	Yanmar	Cummins
	Model	4TNV98CT-NMS Tier IV	4TNV98CT-NMS Tier IV	QSB 4.5 Tier III
	Net Power (kW) @ rpm	70.7 hp (52.7) @ 2500	70.7 hp (52.7) @ 2500	N/A
	Gross Power (kW) @ rpm	72 hp (53.7) @ 2500	72 hp (53.7) @ 2500	99 hp (74) @ 2200
	Displacement (L)	202.6 cu.in. (3.3)	202.6 cu.in. (3.3)	272 cu.in. (4.5)
	Maximum Torque (Nm) @ rpm	217 ft.-lbs. (294) @ 1625	217 ft.-lbs. (294) @ 1625	326 ft.-lbs. (442) @ 1300
HYDRAULIC SYSTEM	Auxiliary Hydraulics - Standard (L/min)	23.5 gpm (89)	23.5 gpm (89)	32 gpm (121)
	High-Flow Hydraulics - Optional (L/min)	35 gpm (132)	35 gpm (132)	40.8 gpm (154)
	High-Flow System Pressure (bar)	3200 psi (220.6)	3200 psi (220.6)	3500 psi (241.3)
	Reservoir Capacity (L)	10.5 gal. (40)	10.5 gal. (40)	16.75 gal. (63)
CAPACITIES / WEIGHT	Rated Operating Capacity ^A (kg)	2700 lbs. (1225)	3300 lbs. (1497)	4000 lbs. (1814)
	Fuel Tank (L)	19 gal. (71.9)	19 gal. (71.9)	31.25 gal. (118)
	Travel Speed - Maximum (km/hr)	7.4 mph (12)	8.1 mph (13.0)	6.5 mph (10.5)
	Travel Speed - Max. with 2-Speed Option ^B (km/hr)	11.9 mph (19.2)	12.2 mph (19.6)	11.2 mph (18)
	Operating Weight ^C - Approximate (kg)	8,150 lbs. (3697)	9090 lbs. (4123)	11,100 lbs. (5035)

- A Per SAE J818, SAE J732, and ISO 14397
 B Two-speed is optional on 2700V NXT2 and standard on 3300V NXT2 and 4000V
 C Unit weight with standard bucket, 175 lbs. (79 kg) operator and full fuel tank

2700V NXT2 / 3300V NXT2 REFERENCE DIAGRAM



4000V REFERENCE DIAGRAM



Mustang reserves the right to make changes in specifications at any time without notice or obligation.